

TOGETHER AGAIN

Reopening JCDSRI, Fall 2020



jewish community
day school of rhode island



Reopening JCDSRI

JCDSRI COVID-19 TASK FORCE

Dr. Nathan Beraha
Pediatric Cardiologist

Antony Bucci
Director of Security
and Physical Plant

Jill Davis
Education Team Leader;
Teacher Representative

Andrea Katzman
Head of School

Rebecca Kislak
Attorney with expertise
in healthcare policy;
RI State Representative, District 4

Harshita Lakhiani
Chief Financial Officer

Dr. Lesley Landau
Psychologist

Mara Ostro
Board Representative

Erika Rusley
Technology Coordinator

J **CDSRI's Reopening Task Force** – with input from our families, faculty, staff, and in close coordination with state and local authorities, public health officials, and our Board of Directors – has developed carefully considered plans for the reopening of our school. Our plans comprehensively address requirements as of July 31, 2020; however, we expect the public health situation will continue to evolve. **As federal and state officials provide new guidance, we will adjust accordingly and keep you updated.** We are confident that our community is uniquely situated to respond flexibly, thoughtfully, and generously to any challenges we might encounter moving forward.

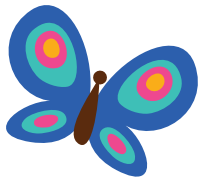
We are pleased to share with you [our detailed plan](#) that focuses on four specific areas:

- physical infrastructure
- scheduling and staffing
- health and behavioral norms
- pedagogy

The plan also includes a format that conforms to RIDE (RI Department of Education) guidelines. For current updates, see the [RI Department of Health](#) and the [RI Department of Education](#) websites.

Gratitude to the following Reopening Task Force members for their tireless work, astounding expertise, and invaluable insights: Dr. Nathan Beraha, Anthony Bucci, Jill Davis, Andrea Katzman, Rebecca Kislak, Harshita Lakhiani, Dr. Lesley Landau, Mara Ostro and Erika Rusley. The Task Force members will continue to provide us with guidance throughout the year, ensuring that we can ably respond to any challenges we might face.

July 31, 2020



Guiding Principles

Dedication to our mission – as well as concern for the safety and well-being of our students, families, and faculty and staff – have informed all of the Task Force’s decisions. In addition, our reopening plan reflects our school’s four core values (respect, loving-kindness, responsibility, community), our commitment to *p’kuach nefesh* (protecting human life) and our dedication to the home-school partnership.

JCDSRI has taken the following steps, detailed in the plan, to mitigate the risk of COVID-19 transmission while providing meaningful and joyful learning experiences:

- Limiting the number of students in each classroom to a maximum of 15.
- Limiting each grade’s movement to either their classroom or a specific area in the building for the school day.
- Limiting the number of teachers interacting with a class by creating *bayteem*/houses – בתים – small, stable cohorts. Each *bayit*/house will include no more than 30 students and no more than three classes.
- Assigning each grade their own bathroom to be used throughout the day.
- Requiring that masks be worn by students, faculty, and staff.
- Integrating cleaning and hand hygiene as a part of classroom routines and rituals.
- Providing social-emotional learning (SEL) in response to the evolving needs of students.
- Designing warm and inviting classrooms that allow for safe student interaction and play.

Our [detailed plan](#), along with specific explanations, is included below. You may click on any of the following links or simply scroll down:

[“How Good It Is To Be Together”](#)

[Learning at JCDSRI](#)

[There Is No Place Like Home; “bayteem” בתים – or houses](#)

[An All-Day, Full Week Experience](#)

[Mask Use](#)

[The JCDSRI Home-School Partnership](#)

[Distance Learning and JCDSRI Learning Management System \(LMS\)](#)

[Our Detailed Reopening Plan](#)

[Community Guidelines](#)



Henei Ma Tov – הנה מה טוב – “How Good It Is To Be Together”



Our students love to go to school and learn together! We know how important it is for young children to come together to learn, play, and connect. We also understand that while we can reduce the risk to your children – as well as to our faculty and staff – we can not eliminate it entirely. There will still be evolving circumstances and challenges over which we have no control, including the current lack of a vaccine, as well as the difficulties of requiring young children to sustain social distancing. That said, we remain focused on what we *can* control in terms of our preparation and planning, with a focus on risk-mitigation and transparency. We are also committed to communicating clearly our successes and our challenges.

We have put in place significant modifications that will keep your children as safe as possible while experiencing the warmth and learning of a JCDSRI experience. The American Academy of Pediatrics addresses this balance when it writes:

Policies to mitigate the spread of COVID-19 within schools must be balanced with the known harms to children, adolescents, families, and the community by keeping children at home. The American Academy of Pediatrics strongly advocates that all policy considerations for the coming school year should start with a goal of having students physically present in school. The importance of in-person learning is well-documented, and there is already evidence of the negative impacts on children because of school closures in the spring of 2020 [\[source\]](#).

Learning at JCDSRI

Every morning, JCDSRI students will begin their day being warmly greeted by teachers, staff, and administrators! Your children will thrive in our nurturing, creative, and joyful learning environment. This year, they will once again experience meaningful connections with their teachers and peers, studying art, physical education, and design thinking along with core academics. Students will be challenged by our rich and diverse Jewish studies curriculum, enjoy celebrating their grade level milestone events, and embrace all the other essentials of the JCDSRI experience.



This year, students will spend most of their day at school learning with their peers in their individual classrooms and outside. The use of outdoor space will be maximized, weather permitting; our playground will be used as an outdoor classroom and discovery area. Each class will also have scheduled access to our gym and other specifically designated areas. Individual students will have their own school supplies and any shared objects will be limited within stable groups. Chromebooks or any other electronics will be assigned to individual students for the entire year.

We will be limiting the number of students in each classroom to a maximum of 15 and limit their movement to either their classroom or a specific area in the building for the school day. Each grade will be assigned their own bathroom to be used throughout the day and students will eat either outside or in their individual classrooms. To ensure that our community can occasionally connect with each other while decreasing the risk of spreading the virus, we have divided our school community into three distinct **בתיים** (*bayteem*/houses), composed of multiple grade levels with no more than 30 children in each one. Classes within each *bayit* will spend time together primarily during recess; when different *bayteem* interact, they will remain 14 feet apart.

The schedules for each grade have been modified to reduce the number of interactions between different groups of children and adults. For example, all teachers have been assigned to a specific *bayit*. Specialists also must remain within a certain *bayit*, and as a result, art, music, Design Lab, physical education, and library will be taught by educators within each *bayit*. Grade-level teachers will share detailed schedules of the school day with families before school begins.

There is No Place Like Home; “Bayteem” בתים – or Houses

Research from the Centers for Disease Control, the Rhode Island Department of Education, and the American Academy of Pediatrics have made it clear that physical distancing, as well as limiting the number of people gathering in a space, effectively mitigates the spread of COVID-19 in schools.

We are especially grateful for our intentionally small class sizes; it allows us to easily limit the number of students and adults a child is exposed to over the course of the school week. To ensure that our community can occasionally connect with each other while decreasing the risk of spreading the virus, we have divided our school community into three distinct בתים (*bayteem*/houses). Each house will have no more than 30 children in it:

Bayit (בית – house) Aleph: PreK and Kindergarten

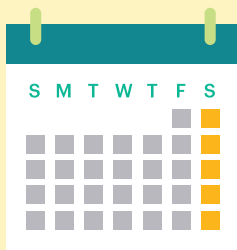
Bayit (בית – house) Bet: Grades 1, 2 and 3

Bayit (בית – house) Gimmel: Grades 4 and 5

This model will:

- cover the full school day.
- allow each grade to stay in their own classroom for much of the day, including during lunchtime.
- limit the number of students in each classroom to a maximum of 15.
- limit the number of students and adults each child will come into contact with each day.
- limit the rooms, hallways, and other physical spaces – as well as supplies and materials – individual students will come into contact with over the course of the day. Each class will have its own designated bathroom.
- allow students to learn alongside each other while maintaining basic physical distancing.
- allow the grades within each *bayit* to play with each other during outdoor recess.
- ensure that educators do not teach in more than one *bayit*. This includes specialists and assistant teachers.
- allow teachers to move between classes within a *bayit* while children remain with their peers, in their classroom or outside, for most of the day.
- allow us to remain at full capacity when classroom density is limited by the state to 15 students per class.





The RI Department of Education has required that we prepare three scenarios for reopening:

- full distance learning
- limited in-person partial learning
- full in-person learning

All three scenarios are included in this document.

An All-Day, Full Week Experience

JCDSRI will offer in-person learning from 7:45am to 3:15pm every day, except Friday when it will be at 1:45pm.¹ Due to new guidelines, early morning drop-off (before 7:45am) or late pick-ups (after 3:15pm) can no longer be accommodated. During drop-off and pick-up, parents and/or caregivers must stay in their car or socially distance from each other on the sidewalk, as only students may enter our building. We will determine once school resumes whether afterschool programs can be safely offered this fall. **Note that Friday dismissal is at 1:45pm.**

¹If the State of Rhode Island announces a “stay-at-home” order, including the closure of schools, JCDSRI will resume distance learning.

Mask Use

The value of *p’kuach nefesh* (protecting human life) requires that we begin the year with a conservative approach to mask use. While we recognize that there may be challenges to requiring elementary children and faculty to use masks, the evidence overwhelmingly supports the importance of universal face coverings in mitigating the spread of COVID-19.

All JCDSRI faculty and staff will wear masks.

Students will wear face masks as much as possible in the classroom and will be required to wear them when traveling outside of their classroom, in hallways, in bathrooms, and when in close proximity to other students within their *bayit*.

When masks are not possible or interfere with instruction, other measures like physical distancing, plexiglass partitions, and outdoor classrooms will be employed.



The JCDSRI Home-School Partnership

We treasure our supportive and engaging learning environment in which children, teachers, and families are deeply connected. We are grateful to our parents and caregivers for their support and trust, and for working in partnership with our educators. Their commitment and generosity helps our community thrive.



This year, our partnership extends to requiring that every family actively help us limit the impact of COVID-19 in our school community and in our state. Significant modifications will be necessary in order for us to return to school and all of us will be required, at some point, to demonstrate flexibility, patience, and grace. ***We are requesting that families stay up-to-date on [Rhode Island health guidelines](#) and follow them outside of school, as well as at JCDSRI.*** We also expect families to support and adhere to all JCDSRI protocols (as detailed in our [Reopening Plan Framework](#)). Our reopening plan includes responsibilities that every JCDSRI family and employee will need to accept. In order for this plan to be successful, every one of us will need to commit to doing our part.

No parents/caregivers in the building | For the safety of our students, faculty and staff, we are not allowing any parents, caregivers, special guests or outside visitors into our school this fall.

Drop off and pick up will occur outside our building and we ask that preschool-5th grade parents do not enter our school for any reason.

Traveling out of state | In order for our reopening to be as safe and successful as possible, **we ask that JCDSRI families and employees do not travel out of state after August 17 (fourteen days prior to the first day of school on September 2).** Families are also required to follow any state and federal travel restrictions as they are announced. At this point, every JCDSRI employee or students traveling to and from a state with a high community spread rate (listed by the Rhode Island Department of Health – [click here](#)) OR traveling out of the country **must** self-quarantine for 14 days before returning to school. (see [RI Department of Health guidelines](#)).

Health screening | On a daily basis, families will screen every student in their household for COVID-19 symptoms before leaving their home and attest that they are symptom-free. All JCDSRI employees will follow the same protocols. Families will receive information before September 2 that will enable them to access an online screening form for daily submission.

If anyone in the household is experiencing [symptoms of COVID-19](#) before the school day begins, the JCDSRI student or employee must stay home.

Quarantine and contact tracing | We have created an isolation room in our school. If a student or employee develops COVID-19 symptoms while at school, they will immediately be moved to the isolation room. Parents/caregivers will be notified to pick up the student within the hour and upon arrival, the student will be escorted to the family's vehicle. Employees will go home immediately.

Parents and sick employees should seek medical advice within 48 hours and schedule a COVID-19 test as needed. Students and employees who exhibit symptoms cannot return to school until they provide documentation from a medical provider indicating testing was negative and there are no other restrictions.



Even if the test is negative, the student or employee must be free of ALL symptoms for a minimum of 24 hours before returning to school. If the test result is positive, individuals must complete a period of isolation as directed by the Rhode Island Department of Health (RIDOH). JCDSRI will follow direction from RIDOH on contact tracing and quarantining, which may include requiring that the student's entire *bayit* (including teachers) also quarantine for 14 days.

If a student has been in known close contact with a person who has tested positive for COVID-19 (e.g. a parent, caregiver, playmate, or sibling), they must self-quarantine for 14 days and immediately inform the school. The student's class will NOT be required to quarantine. Individuals who are self-quarantining must complete a RI Department of Health self-quarantine questionnaire, available [here](#).

If a student develops COVID-19, their entire *bayit* will be under quarantine for 14 days and those students will receive Distance Learning during this time. The infected student's siblings will also be required to quarantine for 14 days, however that sibling's class will NOT be under quarantine, unless they are in the same *bayit*. JCDSRI follows direction from RIDOH on contact tracing and quarantining and as a result, requirements may change.

We respectfully ask for parents and caregivers to **be prepared for children to be sent home** for illnesses that, in previous years, would be considered minor (e.g., colds). If a child is absent for an extended period of time for any reason, we will offer opportunities for them to engage in on-line learning by Zooming or Facetiming into the classroom.

Face masks | Masks must be worn at all times indoors and also worn outdoors in situations where it is difficult to maintain a social distance of 6 feet from others. Masks should: fit snugly but comfortably against the side of the face; allow for breathing without restriction; be able to be laundered and machine-dried without damage. Cloth masks should not be placed on anyone who has trouble breathing, or is unconscious, incapacitated, or otherwise unable to remove the mask without assistance.

All JCDSRI community members must adhere to Rhode Island Phase I, II, and III Guidelines [Click here](#) for specific information and guidance from the state concerning all three Reopening Phases.

Distance Learning and JCDSRI Learning Management System (LMS)

Despite all the changes that occurred last spring during our Distance Learning phase, one thing remained the same: our understanding that significant relationships lead to significant learning. Our educators are committed to providing their students with engaging, challenging, and meaningful learning experiences, regardless of the circumstances.



If Rhode Island does see a second wave of COVID-19 at any point and schools are ordered by the state to close, JCDSRI will integrate our past successes with lessons learned. We have decided to use [Seesaw](#) as our Learning Management System (LMS) in addition to our newly created **Distance Learning Page** on our **Parent Portal** of our revamped [website](#) (to be launched on August 3). Seesaw and the Parent Portal will help parents/caregivers and students effectively and easily manage their distance-learning experiences and require that they have to master only *one* major Learning Management System during school closure, regardless of subject or grade level. All weekly schedules, pacing guidelines, and materials may be accessed through the Parent Portal of our website.

Seesaw allows teachers, students, and their parents/caregivers to effectively manage their distance-learning activities and **offers consistent and meaningful opportunities for sharing and feedback, both elements of learning that are essential to our JCDSRI educational experience.**

Families can share information with teachers and are regularly kept in the loop about assignments and completed work. Students can receive encouragement and support from their teachers, as well as easily keep track of their progress. **Seesaw is also fun for elementary school learners.** There are all sorts of fun ways to use Seesaw – videos, photos, drawings, photo libraries. For example, students can write with a glowy pen to identify the capitals of the northeast states, or record themselves reading Hebrew, or add emojis and shapes to their posts, right in the app.

We recognize that not every family has ready access to a home computer, and some families may be sharing a computer. Therefore we have chosen an app that is easy to use, developmentally appropriate, *and* integrates seamlessly with smartphones. In addition, students will be able to film videos and take photos with the Seesaw app, giving them ownership over their work. Further, when we are engaged in in-person learning, teachers can take photos into the Seesaw app “in the moment” to share with students and families.



Please click on the following or scroll down for the following information:

- [JCDSRI's Fall Reopening Plan Framework](#)
 - [Students, Staffing and Scheduling](#)
 - [Physical Infrastructure](#)
 - [Health and Behavioral Norms](#)
 - [Pedagogy](#)
- [Community Guidelines](#)
- [RI Department of Education \(RIDE\) Reopening Plan Checklist](#)
- [RIDE Scenarios for Reopening](#)

Fall Reopening Plan Framework

1 STUDENTS, STAFFING AND SCHEDULING

Students

- Stable groups (House or “Bayit” in Hebrew – בית) of maximum of 30 children. Each individual class will not exceed 15 children.
- Teachers stay with only one of 3 “bayteem” houses – בתים :



Bayit (בית – house) Aleph: PreK and Kindergarten

Bayit (בית – house) Bet: Grades 1, 2 and 3

Bayit (בית – house) Gimmel: Grades 4 and 5

During full, in-person learning, classes within the bayteem may interact. Limited in-person learning requires each class stay separated.

- Groups in larger spaces: Stable groups (bayteem) must remain separated from each other by at least 14 feet.
- We will utilize partitions or other dividers.

Faculty/Staff

- Faculty and staff who are not assigned to a stable group should maintain 6 feet of physical distance whenever possible and should wear face masks.
- Plexiglass barriers have been installed at the front desk.
- The Faculty Room has been moved to a larger space on the second floor, allowing for additional social distancing for faculty and staff.
- Faculty and staff will wash their hands for at least 20 seconds with soap and water frequently throughout the day, but especially before they enter and exit a classroom, prior to any mealtimes, and after using the restroom.
- Employees are required to wear face coverings indoors. They will also wear masks outdoors if a distance of 6 feet cannot be maintained.
- All teacher meetings will occur socially distanced or by Zoom.
- All faculty and staff are expected to physically distance from each other unless they are part of the same class or stable group.

Arrival & Dismissal

- Parents/caregivers must stay in the car or socially distanced on the sidewalk. Only students may enter school.
- Families will screen students at home for [COVID-19 symptoms](#). Students must stay home if they do not pass the screening. Families will receive information before September 2 that will enable them to access an online screening form for daily submission.
- Students will sanitize their hands upon entering the building at hygiene stations in the school.

Recess, Lunch & Assemblies

- Recess will be scheduled so that one class or bayit is in a specific playground.
- Lunch will be eaten in the classroom.
- All-school assemblies will be held in bayteem, socially distanced, and over Zoom.

2 PHYSICAL INFRASTRUCTURE

General Spacing & Movement

- Classes will occupy consistent space as much as possible, using the same classroom every day, the same entrance every day, the same hallways, and other areas of the school building. Each grade will have its own designated bathroom.
- Shared objects are limited within stable groups.

Signage

- Signage about protocols, cleaning, etc. posted within and outside of the building.

Classroom Layout

- Desks and tables will be separated 6 feet apart whenever possible.
- Grades 1-5 will have individual desks in the classroom.
- Students will face the same direction whenever possible.
- Teachers will assign seating both at desks and on the carpet.
- Playground will be closed for use before and after school.

Bathrooms

- Each grade will have an assigned bathroom that may only be used by that individual grade. (6 student bathrooms in the school were renovated this summer)
- Bathrooms will be regularly cleaned and disinfected in line with CDC guidance.

Isolation Room for Ill Children *Mirpa'ah*/מִרְפָּאָה

- We will have an “isolation room” – *mirpa'ah* or מִרְפָּאָה that will allow us to separate anyone who exhibits COVID-like symptoms.
- The *mirpa'ah*/מִרְפָּאָה will include a cot and disposable sheets, blankets, PPE, etc.
- As required by the Board of Health, we will notify local health officials, staff, and families immediately of any possible case of COVID-19 while maintaining confidentiality as outlined by the Americans with Disabilities Act (ADA).
- The *mirpa'ah*/מִרְפָּאָה will be thoroughly cleaned after each use.

3 HEALTH AND BEHAVIORAL NORMS

Cleaning, Sanitizing & Disinfecting

- We will adhere to CDC guidance for schools regarding the cleaning and disinfecting of all surfaces and spaces.
- All shared spaces will be cleaned and disinfected between uses.
- Play equipment will be cleaned between uses.
- We will avoid using toys and materials that have porous surfaces (like stuffed animals).

Frequently Touched Surfaces

- Frequently touched surfaces and objects are cleaned, sanitized, and disinfected multiple times per day.
- Each child's belongings will be separated and placed in individually labeled storage containers, cubbies, or areas.
- Art supplies, learning aids, textbooks, etc., will generally be assigned to a single student or we will limit the use of supplies and equipment to one group of children at a time and clean and disinfect between use.
- We will avoid sharing electronic devices. Chromebooks will be assigned to each student in Grades 1-5 for the year.
- Gloves are not required, except for custodial staff who are cleaning and in specific situations where more protective equipment is needed.

Disinfectants

- Organic and non-toxic cleaners will be used whenever possible (following CDC recommendations).
- We will increase circulation of outdoor air as much as possible when using disinfectants/cleaning materials.

Air Circulation

- Additional air purifiers will be used by classrooms where necessary.
- Windows will be kept open when possible to promote air circulation.

Water Usage

- We have checked that all water systems are safe to use after a prolonged facility shutdown.
- Contactless water-filling stations may be used.

Handwashing

- Students, faculty and staff will have access to soap and water and/or hand sanitizer containing at least 60% alcohol at all times.
- Faculty, staff and students will wash their hands for at least 20 seconds with soap and water frequently throughout the day, but especially before they enter and exit a classroom, prior to any mealtimes, and after using the restroom.
- Frequent handwashing will be taught and practiced; preschool and Kindergarten have sinks in the classrooms.

Masks

- Face coverings will be used by students in K-5th grade, faculty and staff.
- Employees are required to wear face coverings at all times unless social distancing is possible outside.
- Both face masks *and* clear plastic face shields will be provided to every faculty and staff member.

Screening Students, Faculty & Staff

- **Students:** On a daily basis, families will screen every student in their household for COVID-19 symptoms before leaving for school and attest that they are symptom-free. All JCDSRI employees will follow the same protocols. Families will receive information before September 2 that will enable them to access an online screening form for daily submission.
- If anyone in the household is experiencing [symptoms of COVID-19](#) before the school day begins, the JCDSRI student or employee must stay home.

Communication of Guidelines & Restrictions to Families

- Communication to family members asking them to avoid introduction of infection in the household (see [Community Guidelines](#)).
- Restrictions if families travel to states that do not have declining Covid cases (including required 14 day quarantine).

4 PEDAGOGY

Curriculum

- Assess students' learning progress and include multiple forms of assessment (diagnostics, formative, student work) for all students.
- Engage in annual reassessment of curriculum.
- Continue to use our process for identifying students potentially in need of additional supports (academic or social/emotional) and for determining when students may no longer need additional services (entrance and exit criteria for interventions).

Social & Emotional

- **Teacher Training:** Meghan Cavanaugh, JCDSRI Social Worker, will lead Professional Development workshops throughout the year with a particular emphasis on Social and Emotional learning (SEL).
- **Parent Support:** Meghan will continue to offer Zoom workshops/support groups for parents throughout the year.
- **Mindfulness & Meditation** – We have a partnership with IJS (Institute with Jewish Spirituality):
 - ~ Half our staff enrolled in a 13 module course over the summer ([link](#)).
 - ~ We are part of an IJS/Covenant Foundation year-long grant, during which we will receive training and support as we increase Jewishly-focused meditation and mindfulness in our classrooms.
- Continuation of [Positive Discipline](#) training.
- Parent/Caregiver and student preparation for the beginning of school:
 - ~ Inviting parent feedback ([this link](#)).
 - ~ Zoom meeting with new families held in June.
 - ~ Two Zoom “Town Hall Meetings” for all families scheduled August 6 and August 10 at 8:00pm (with presence of the Task Force).
 - ~ One Zoom “Town Hall Meeting” in August for students facilitated by Andrea and Meghan.
 - ~ Zoom “home-visits” prior to the beginning of school.
 - ~ In-person visits to school for PreK, K and all new students prior to September 2.

Technology

- Hired a Technology and Distance Learning Coordinator (Erika Rusley).
- Continued professional development on all digital learning platforms.
- Identify and articulate expectations re: digital citizenship and internet safety according to developmentally appropriate practice (DAP).
- Informed parents about our choice of platforms and digital citizenship.



JCDSRI Community Guidelines

The Task Force has indicated that our *entire* community must work together to uphold standards of behavior and public health best practices that support wellness. At JCDSRI, we believe that we must take responsibility not only for ourselves, but for the health and safety of our neighbors, friends, and strangers.

In order for us to return to in-person learning, we require a commitment from everyone in the JCDSRI community to review and follow our safety protocols. We request that families stay up-to-date on Rhode Island health guidelines and follow them outside of school as well as at JCDSRI. [Click here](#) for specific guidance from the State concerning all three Reopening Phases.



Traveling out of state (see: [RI Out of State Travel Compliance Certificate](#))

- ALL students traveling to and from a state with a high community spread rate (listed by the Rhode Island Department of Health – [click here](#)) OR traveling out of the country **must** self-quarantine for 14 days before returning to school.

Face masks

- Outside of school, we ask that face coverings or masks be worn in situations where it is difficult to maintain a social distance of 6 feet from others.

Indoor settings and outdoor settings (Phase III)

- The smaller the group, the lower the risk.
- As much as possible, we ask for families to limit their child's interactions with friends to their child's *bayit* when socially distanced playdates are not possible.

Self-quarantine

- If a student has been in *known close contact* with a person who has tested positive for COVID-19 (e.g. a parent, caregiver, playmate, or sibling), they must self-quarantine for 14 days and immediately inform the school. The student's class and *bayit* will NOT be required to quarantine.
- If a student develops COVID-19, their entire *bayit* will be under self-quarantine for 14 days and those students will receive Distance Learning during this time. The infected student's siblings will also be required to quarantine for 14 days, however that sibling's class will NOT be under quarantine, unless it is in the same *bayit*.
- Individuals who are self-quarantining must complete a RI Department of Health self-quarantine questionnaire, available [here](#).

RI Department of Education (RIDE) Reopening Plan Checklist

Planning & Governance	Completed
Launch Reopening School Committee	✓
Compile feedback from stakeholders – and ensure that vision is in line with organizational mission and values	✓
Define and assign roles for Reopening Task Force	✓
Assess where additional support and capacity might be needed for school	✓
Conduct technology audit	✓
Assess and update how we manage student enrollment and attendance for next year	✓
Review staffing and scheduling	✓
Teaching & Learning	Completed
Build a Teaching & Learning working group (including tracking student achievement and interventions)	✓
Identify most vulnerable students and begin a plan to meet their needs (including those who cannot access in-person learning)	✓
Finalize changes to testing, grading, progress reports for close of 2019-20 school year	✓
Ensure that teachers are engaged in intentional curriculum planning and documentation for next year	✓
Wellness & Safety	Completed
Build a Wellness & Safety Subcommittee	✓
Determine facility needs: <ul style="list-style-type: none"> a. Audit cleaning, disinfecting, etc. b. Determine other needs based on CDC Guidelines c. Follow current CDC Cleaning Guidelines (including scheduling and staffing needs) 	✓
Assess current mental health resources to determine whether there is a need for additional support	✓
Evaluate staff mental health assessing readiness to return	✓
Provide resources for staff and student self-care	✓
Assign one representative to work with RIDOH on contact tracing, case investigation, isolation and quarantine, and any other follow-up related to outbreak containment	✓
Consult www.reopeningri.com/ , the RIDOH website, and the Governor's Executive Orders on a weekly basis or whenever notified of the availability of new guidance	✓
Professional & Learning Supports	Completed
Assess professional needs for faculty and staff	✓
Explore professional learning for teachers around social/emotional learning and cultural responsive education	✓
Review adjustments to curriculum and Distance Learning capacities	✓

Scenarios for Reopening; Rhode Island Department of Education

SUBSTANTIAL

Full distance learning for all

See plans as detailed above

- Teachers will create weekly schedules with links and info.
- We've included a "Parent Portal" on our website, where the links/info will be added weekly for parents to access.
- JCDSRI will offer a parent meeting with our Technology Coordinator re: the platforms will be using (including Zoom and SeeSaw).
- Students from Grades 2-5 will receive a Chromebook to use during Distance Learning. Chromebooks will be available for any families of PreK- Grade 1 students who need one.
- Students will receive daily synchronous and asynchronous lessons.
- Students will continue to also receive physical supplies and lessons, depending on curriculum and needs.
- Scope & Sequence (both in General Studies, Judaic Studies, and SEL – social/emotional learning) will continue. Assessments will continue virtually.
- Thrice weekly all-school "live" virtual assemblies will be offered.
- Weekly synchronous specialties will continue.
- Meghan will offer support groups for parents.

MODERATE

Limited in-person learning

See plans as detailed above

- Classes will be limited to 15, allowing us to remain at full capacity.
- If we are required to resume distance learning to prioritize in-person learning for some elementary grades, preschool, Kindergarten, grade 1 and grade 5 will learn in the school while grades 2, 3, and 4 will engage in distance learning.

TO MINIMUM

Partial in-person learning

See plans as detailed above

- Classes will be limited to 15, allowing us to remain at full capacity.
- If we are required to resume distance learning to prioritize in-person learning for some elementary grades, preschool, Kindergarten, grade 1 and grade 5 will learn in the school while grades 2, 3, and 4 will engage in distance learning.
- If required to further limit the number of students in the school, Kindergarten and 5th grade will learn in person.

MINIMUM TO NONE

Full in-person learning for all

See plans as detailed above

- Resume 100% in-person with some social distancing protocols required based on current health info.
- Distance learning integrated with in-person as necessary.



